

Immunization Data Enhanced Analysis (IDEA)



Advancing Public Health Outcomes Through Information Technology

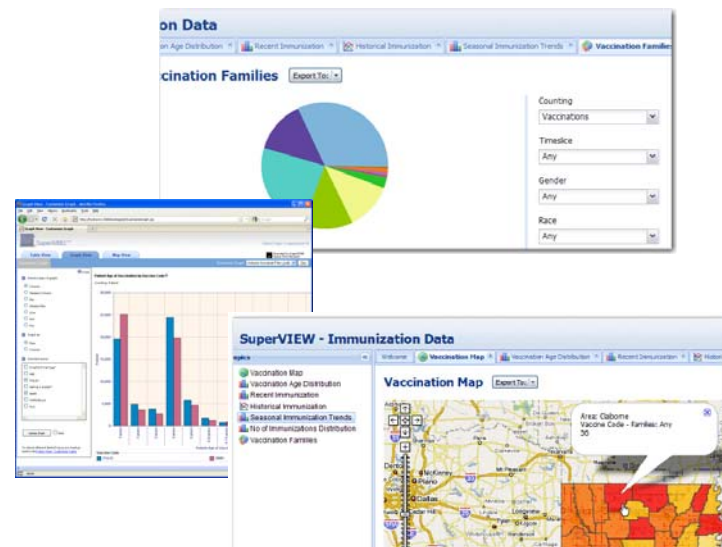
The STC Immunization Data Enhanced Analysis (IDEA) package is a collection of data analysis, visualization and ad hoc mapping and reporting tools, and professional services designed to integrate enhanced analytic capabilities to users of population-based Immunization Information Systems (IIS). The tools are flexible, easy-to-use, and configurable based on client-specific needs. STC provides bundled professional services to collaboratively identify and configure existing IIS data elements to allow users to create and use new groupings of data (e.g., age-ranges, catchment areas, vaccination status). Application tools allow users to rapidly build and re-build queries, perform canned or ad hoc statistical analysis, and visualize the results through maps and a variety of thematic graphical displays.

STC has partnered with Space-Time Research (STR), a leader in high-volume business intelligence analytics applications, to provide the IDEA package of enhanced data analytic and visualization tools and services. The core component and several complementary tools provide the following capabilities:

- ➔ **Self-service Business Intelligence Platform** – provides detailed record access, high-speed ad hoc tabulations through simple column-and-cell-based query building, data confidentiality controls, thematic mapping, and interactive data displays.
- ➔ **Online Micro-analytical Graphical User Interface** – supports multidimensional table construction and querying from large databases for non-technical users without programming experience.
- ➔ **Dynamic Web-based Thin-client User Interface** – enables a distributed public health workforce interactive access to multidimensional table-building, map and chart construction, and report generation.
- ➔ **Interactive Web-based User Interface** – gives guided analysis to information consumers beyond the professional public health workforce.

STC can help you evaluate how to integrate these powerful capabilities with your existing IIS and use them to address important public health decision-making activities such as:

- Analyzing pockets of need and area-specific vaccination rates.
- Organizing and evaluating reminder/recall campaigns.
- Monitoring distribution of vaccines during routine (seasonal) and event-based (e.g., H1N1) campaigns.
- Evaluating provider participation and planning provider recruitment efforts.
- Reporting for CDC and other project requirements.
- Planning and applying for new funding opportunities.



For more information or a demonstration, please contact
Scientific Technologies Corporation